

oakheart



£240,000

Guide Price

Fox Way, Colchester

Guide Price: £240,000 - £250,000.

A spacious and beautifully maintained two-bedroom, two-bathroom top floor apartment, ideally situated in the sought-after area of North Colchester. The property offers superb access to the new Northern Gateway Leisure Park, the A12, and Colchester North Station, providing direct links to London Liverpool Street—perfect for commuters and leisure seekers alike.

Upon entering, you are welcomed by a bright and airy entrance hall featuring multiple storage cupboards. The principal bedroom benefits from built-in wardrobes and a modern part-tiled en-suite shower room. A further generous double bedroom is served by a stylish part-tiled family bathroom.

The heart of the home is the impressive open-plan kitchen, dining, and living area, designed with modern living in mind. The kitchen boasts a range of sleek gloss units, granite worktops, and

integrated appliances, while the living area features a newly built media wall with space for a TV and a built-in electric fireplace—creating the perfect space to relax and entertain. Multiple large windows flood this room with natural light, and a door opens out to a sizeable balcony offering peaceful woodland views.

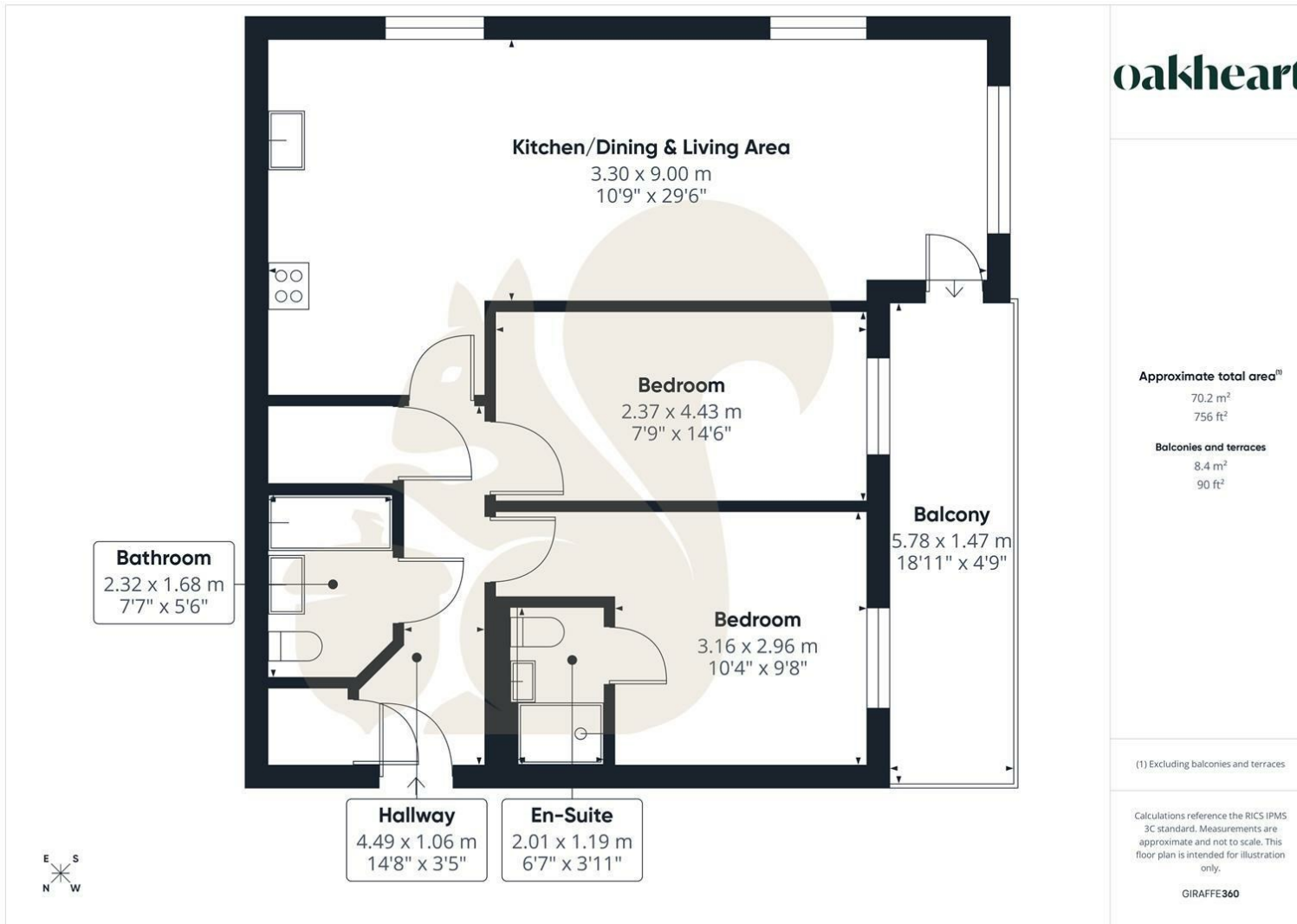
Externally, the property benefits from an allocated parking space in front of its own single garage, along with additional visitor parking available within the development.







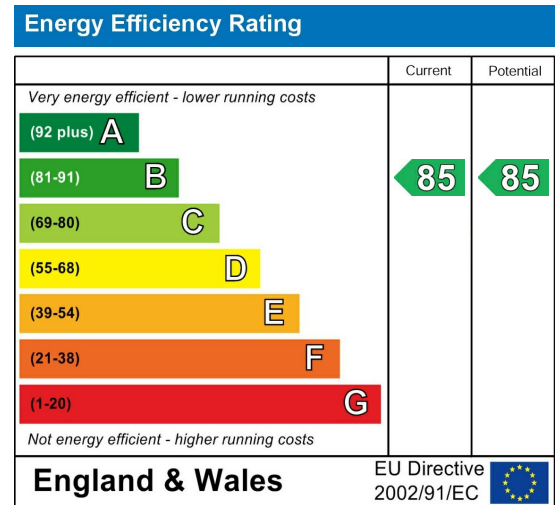




Local Authority:
Colchester

Tenure:
Leasehold

Council Tax Band:
B



Agents Note: Whilst every care has been taken to prepare these particulars, they are for guidance purposes only. All measurements are approximate and are for general guidance purposes only and whilst every care has been taken to ensure their accuracy, they should not be relied upon.

Oakheart Colchester
01206 803 308
colchester@oakheart.co.uk
2b Cotman Road, Colchester, Essex, CO3 4QJ

oakheart